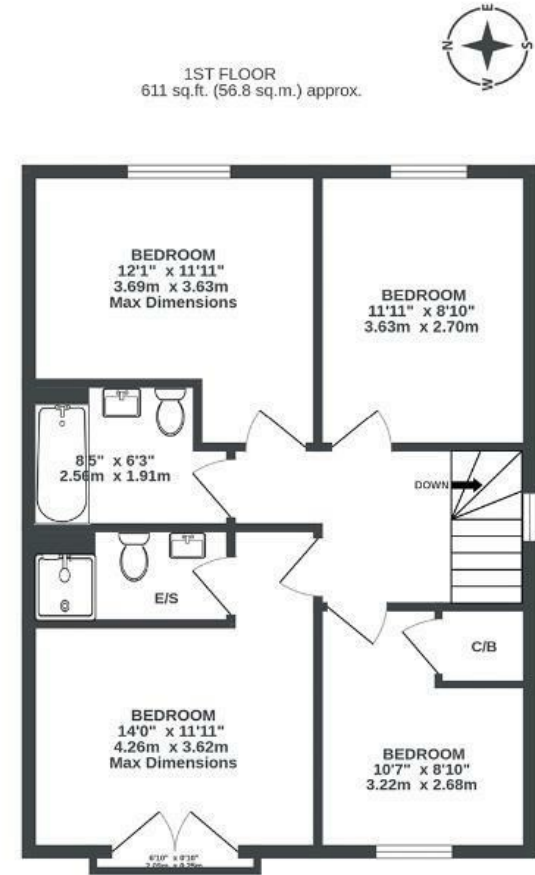
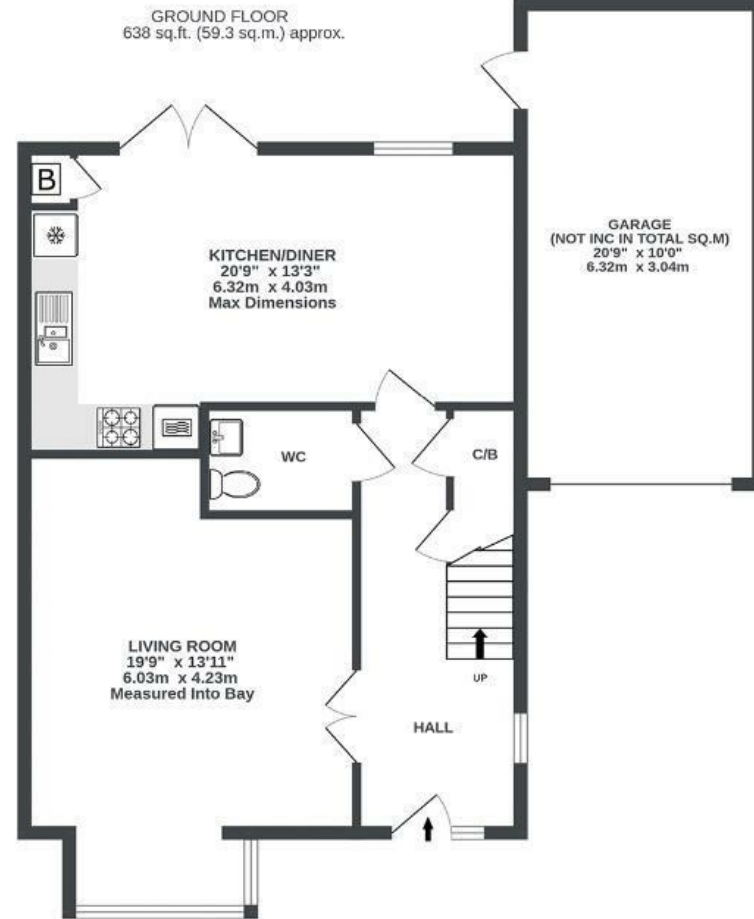


Oakhill Drive

B E D M I N S T E R

APPROXIMATE FLOOR AREA
116.1 SQM / 1249 SQFT



Illustrations are for reference purposes only, measurements are approximate, not to scale.

Boardwalk

Oakhill Drive

, BRISTOL



£550,000



4 Bedrooms



BS3 5EU



2 Bathrooms

"Having the ability to walk to Victoria Park with two small children has been invaluable, the ability to meet friends & have a coffee in the park whilst they play before heading back & having a drink in the garden as the sun goes down over the house."

